



Welcome to Jinju

— An introduction for prospective teachers —

Table of Contents

1. About Jinju
2. Living & Working in Jinju
3. Transportation
4. Recreation
5. Major Events in Jinju
6. Tourist Attractions
7. Other Things

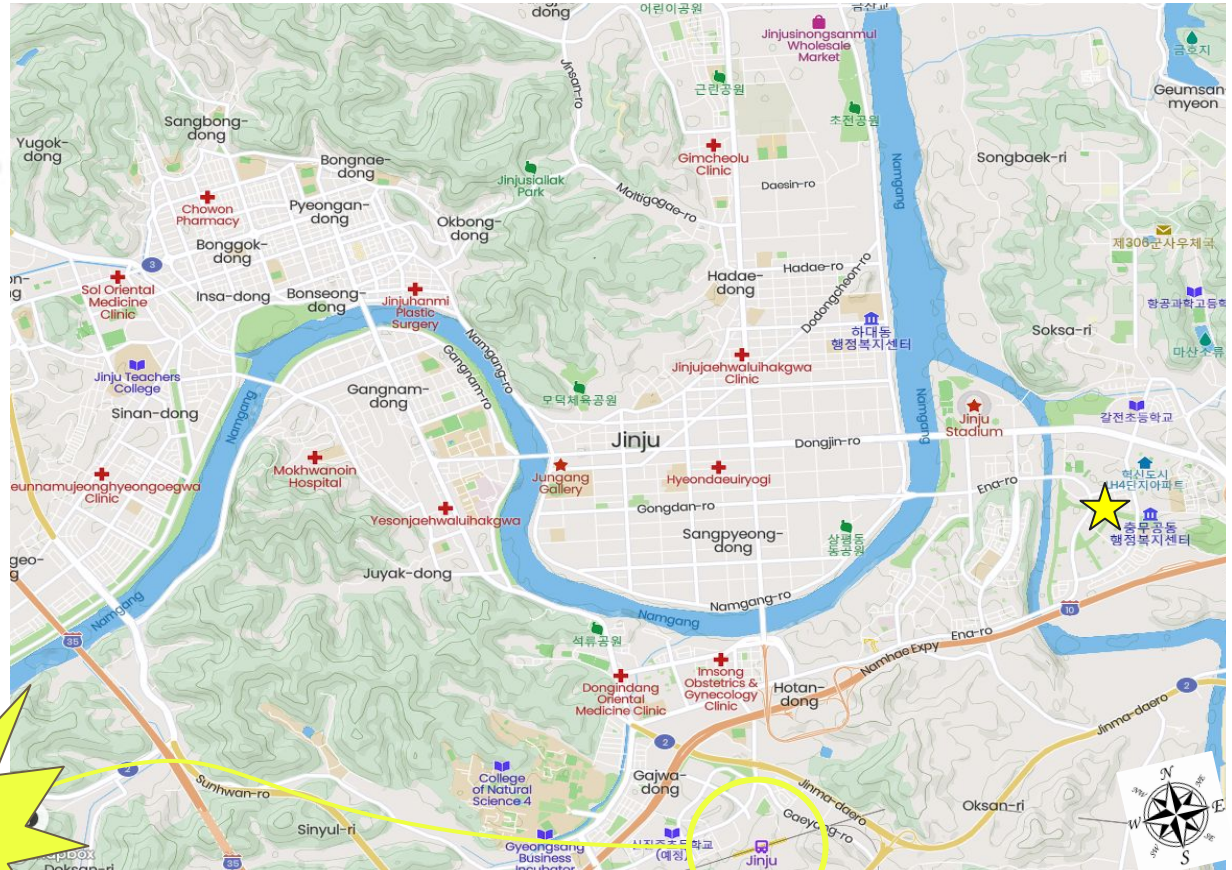


(above) Aerial view of the Jinju Lantern Festival

Welcome to Jinju

About Jinju

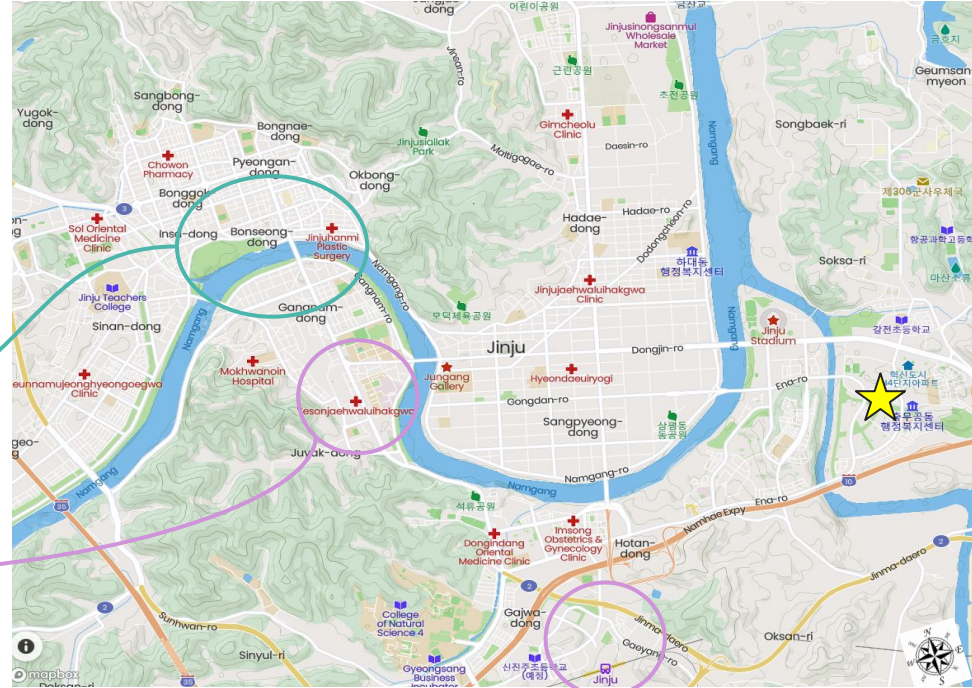
Map of Jinju (COLAT is in an area called "Innovation City" marked with the star)



Jinju has a KTX station!

How Jinju is on a map

- Jinju is a central city in the region of Gyeongsangnam-do in the south of Korea about hour away from Busan.
- The town is cut in half by the Nam River (*Namgang*), with Jinju Fortress, downtown, and the intercity bus station all on the north bank.
- Jinju Station and the express bus terminal sit on the south bank.



Size, population, and universities

Jinju is a medium-sized city with a population of about 350,000 people. It is an educational city with one college and four national universities. It is a historical city famous for [Jinju Castle](#).



Jinju National
University of
Education



Jinju Health
College



Gyeongsang
National
University



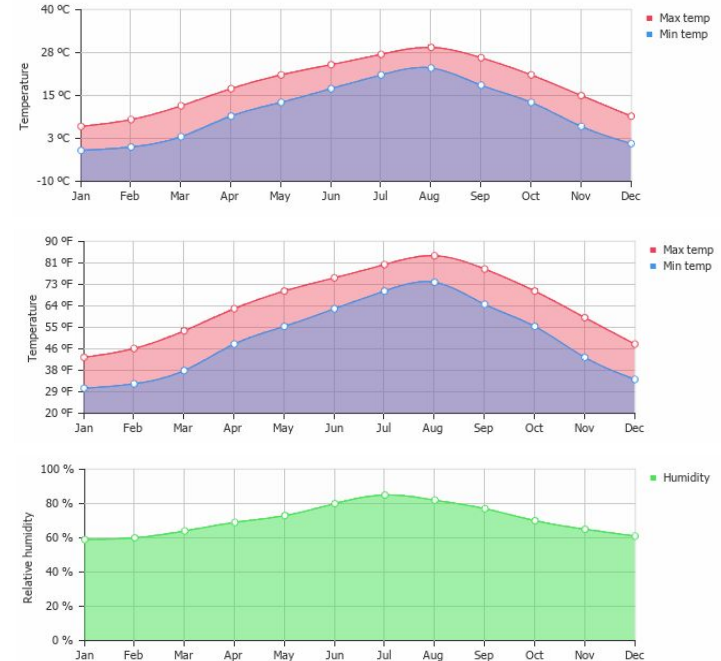
Gyeongnam
National
University of
Science and
Technology



International
University of
Korea

Temperature and humidity

- The weather is moderate year-round. It is a comfortable place to live.
- The temperature varies from around 5°C (41°F) to 32°C (90°F) on average.



Rain and sun

- It is common to have rain year round.
- And it rains a lot in July!
- But Jinju is a sunny place because it is close to the ocean



Welcome to Jinju

— Living & Working in Jinju —

Where is Rise? Where is LIIP?



Rise and LIIP are in the heart of Innovation City (above; looking out from [Raon Apartments](#) where most Rise teachers live).

What is Rise? What is LIIP?

Rise and LIIP are two different hagwons which are part of a larger education platform run by COLAT.

Rise is an international education franchise. Rise serves K-8 students.

LIIP is COLAT's own international education program. LIIP serves grade 1 - 5 students.



Rise and LIIP share some of the same resources like buses and spaces like the gym. Sometimes LIIP teachers substitute for Rise teacher. Some Rise teachers teach LIIP classes in the afternoons.



What is Rise like?



The main entrance is on the 4th floor of the Towon Building (left). The 4th floor has a huge Library, three large rooms dedicated to LIIP.

What is Rise like?



The teachers' room is also on the 4th floor. All Rise teachers have a desk in this room. This is where teachers do administrative work like planning, report cards, and color printing.

What is Rise like?



The Rise kindergarten program uses the 5th and 6th floors of the Towon Building in Innovation City. This is the front desk for the 5th floor.

The 5th floor has an activity space, gym, conference room, and supply room in addition to classrooms.

Rise kindergarten runs from 9:30 am to 3:30 pm. Foreign teachers work here from 9:30 am to 2:30 pm.

What is Rise like?



The kindergarten classrooms are bright and spacious. Kindergarten teachers work in these classrooms with their co-teachers.

What is Rise like?



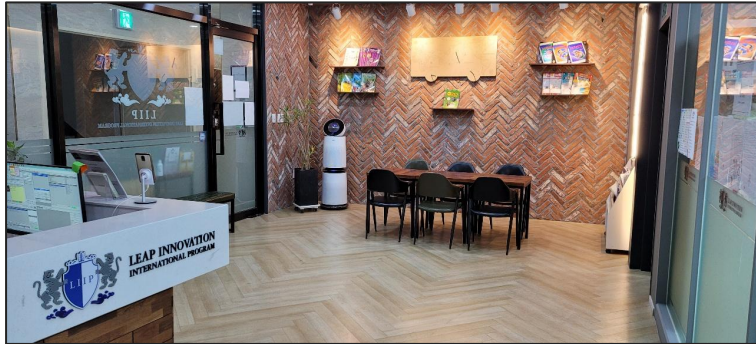
The 5th floor of the kindergarten has a special library and activity space for young learners. Classes are sometimes taught in this room as well.

What is Rise like?



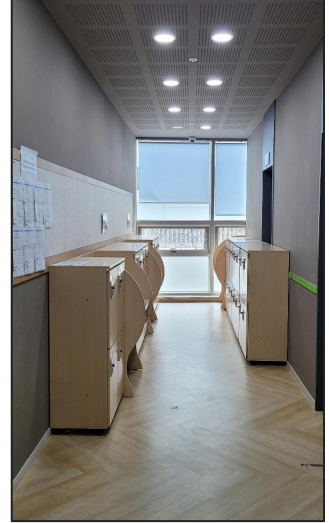
The 6th floor has a kitchen (left) which is used to teach cooking classes to LIP students and Rise kindergarten students. The 5th floor has a gym (right) for events and play.

What is LIIP like?



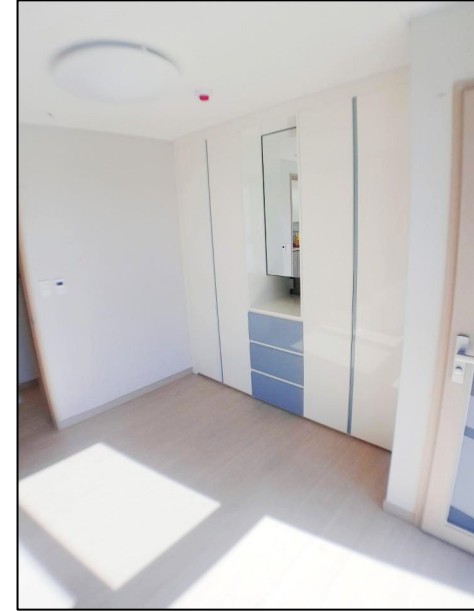
LIIP shares the 3rd floor of the Towon Building with an affiliated (part of COLAT) mathematics academy called SOMA. This floor also has a non-affiliated art academy.

What is LIIP like?



LIIP has five classrooms on the 3rd floor, including: a science room, an art room, and a computer lab. There is also a teachers' room. LIIP is an all-day English immersion program which uses student-centered and project-based learning to meet curriculum goals and objectives based US standards. Students attend classes from 9:30 am to 4:30 pm.

Where do the teachers live?



Teachers are provided with housing built in 2015 or later. If you are **single**, you will get a studio-style apartment a brief walk away from work. More examples of housing including a list of furnishings can be found at <https://hiring.i-i.cc/colat-housing.jpg>.

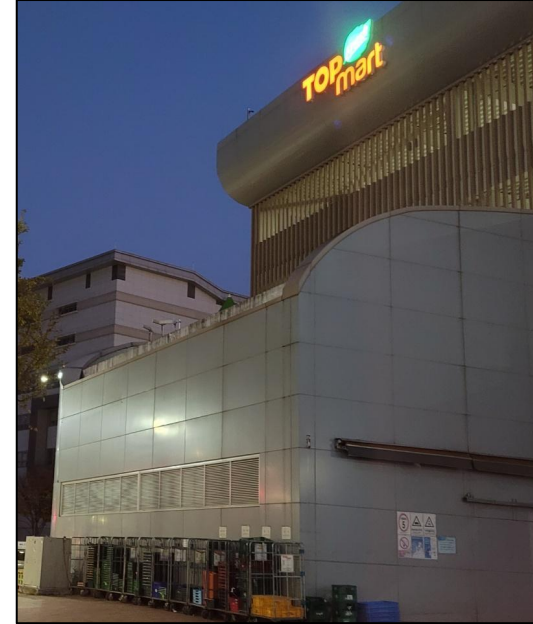
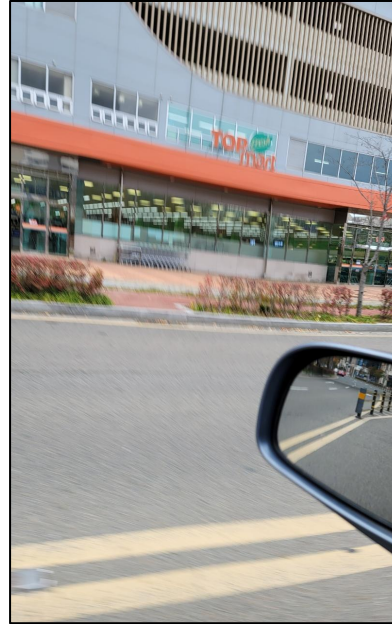
Where do the teachers live?



Teachers are provided with housing built in 2015 or later. If you are a **couple**, you will get a two-room apartment a brief walk away from work. More examples of housing including a list of furnishings can be found at <https://hiring.j-i.cc/colat-housing.jpg>.

Groceries

- **TOP mart** is a supermarket next to the Towon Building
 - decent selection of fruits, vegetables, meat, poultry, and fish
 - small bakery with fresh bread
 - some Western and Middle Eastern foods
 - open from 10am to 11pm; 055-743-6300
- Bigger supermarkets like **emart** and HomePlus are also located in Jinju



Groceries

- **emart**
 - clothes, household appliances, and various other products can be bought at lower prices than department stores.
 - has an eyeglasses store
 - has a pharmacy
 - open from 10am to 11pm; 055-749-1234
- Located near Jinju Castle across from Jinju Public Health Center



Groceries

- **HomePlus**
 - clothes, household appliances, and various other products can be bought at lower prices than department stores.
 - has an eyeglasses store
 - has a pharmacy
 - open from 10am to 11pm; 055-749-1234
- Located in Sangdae 2-dong, about a hour walk from our school



Everyday, Household, and Kitsch Items

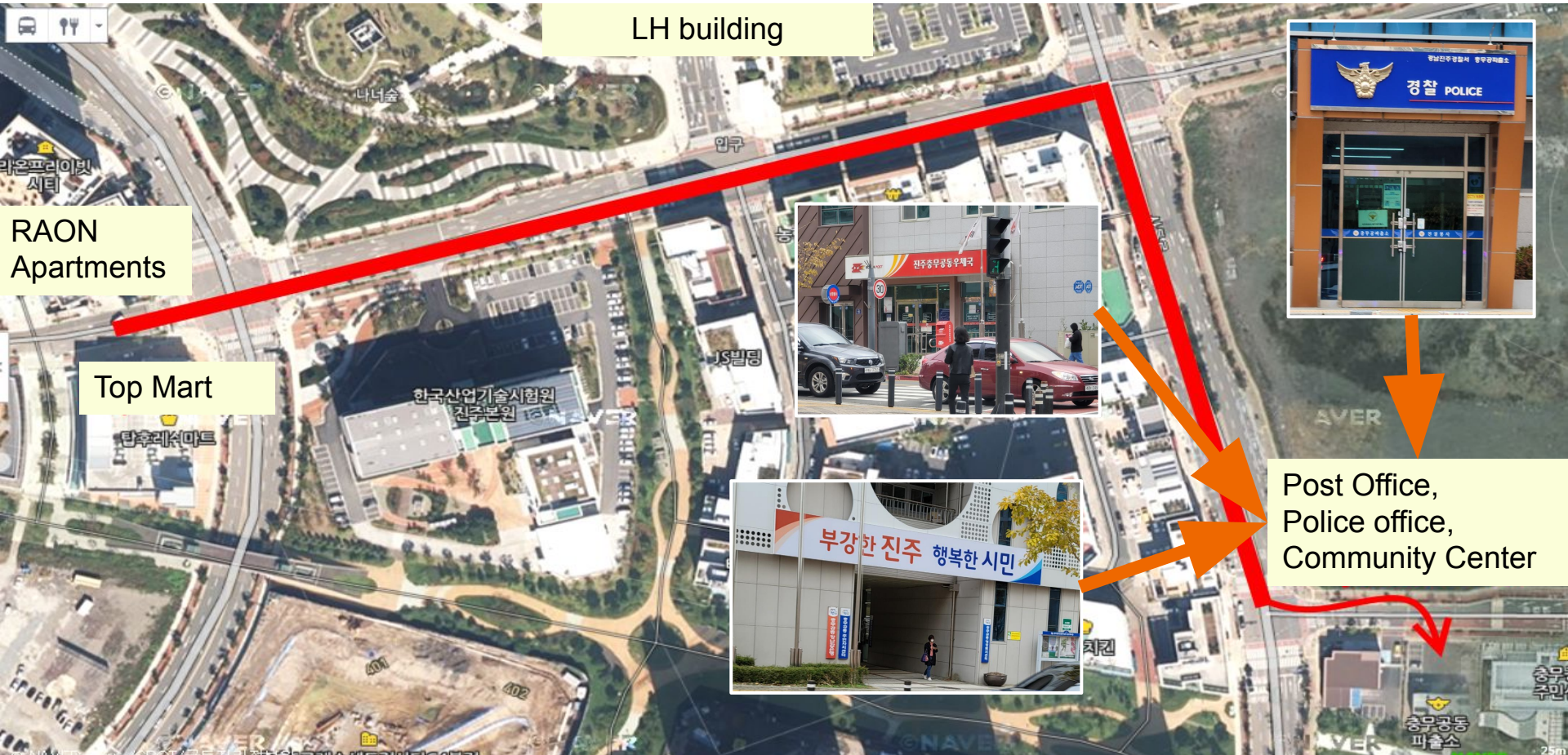
- **daiso**

- Various household items can be bought for a very cheap price
- Don't expect too much in terms of quality!
- There are few electronic products and not much clothing
- open from 9am to 10pm; 055-749-1234

- Located in about a 15-20 minute walk; the largest one is in Pyeongseo-dong



Post Office, restaurants, police, and community center ... all close by



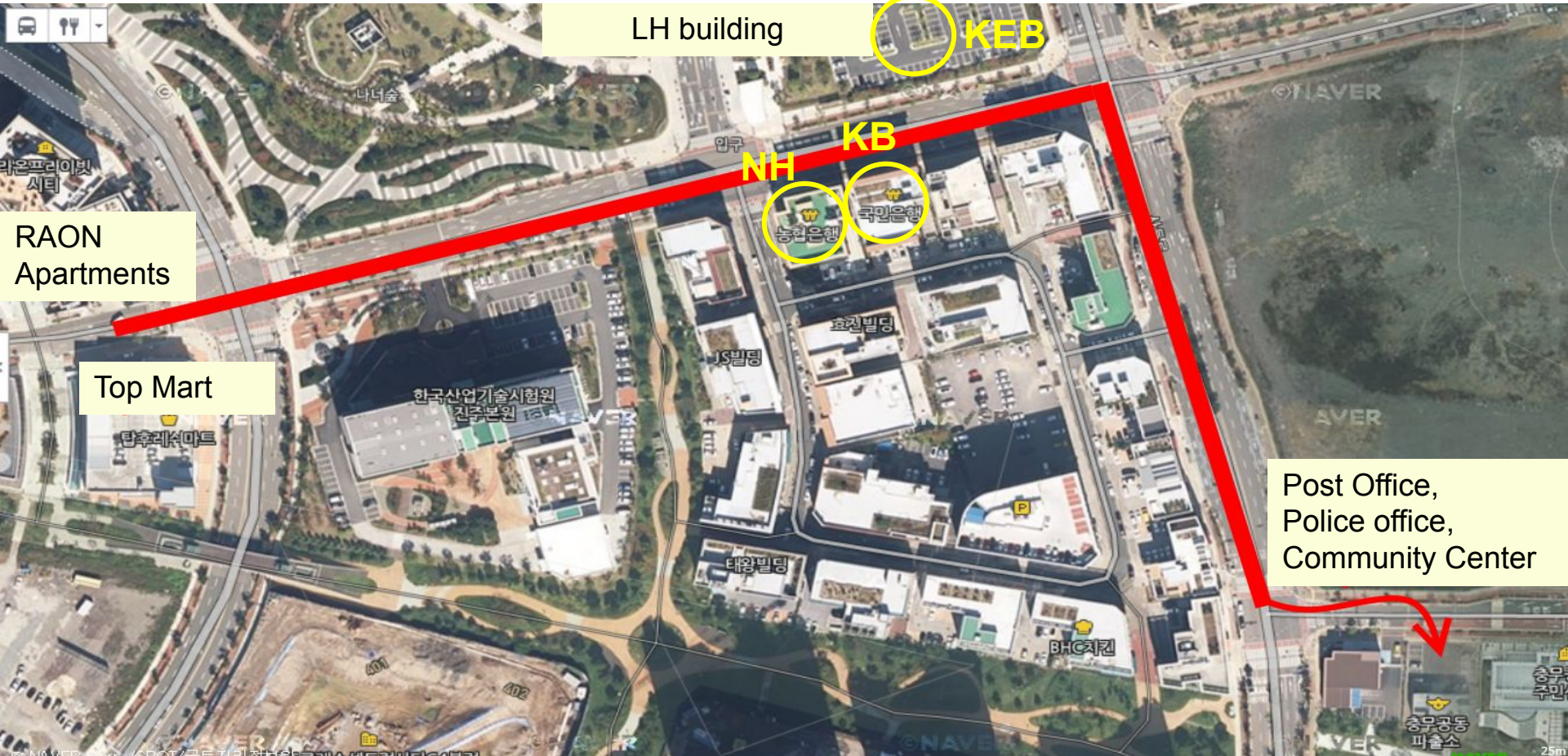
Banking

- Nonghyup (농협)
 - Most commonly found bank in Gyeongsangnam-do; across from the LH building
- KB (국민은행)
 - Across from the LH building
- KEB HANA (하나은행)
 - On the 1st floor of LH building



* Local headquarters for each bank are located downtown

Nonghyup, KB, and KEB Hana ... all close by



Medical Treatment Options

Major Hospitals in Jinju

- GyeongSang University Hospital
055-750-8282
- Jinju Goryeo Hospital
055-751-2525
- Jeil Hospital
055-750-7119
- Bando Hospital
055-749-0200
- Jinju Medical Clinic
055-740-8281
- Hanil Hospital
055-750-1333



Welcome to Jinju

— Transportation —

Transit information for getting around Jinju

- Jinju city buses are green or blue (blue is for electric buses)
- The cost of a ride is 1,500 won (cash) or 1,450 won (bus card)
- You can buy a bus card at most local convenience stores and top it up whenever you are running out of funds.



Transit information for getting around Jinju

- Taxis are available most of the day, until around 3am.
- The starting fare is 3,300 won and the price increases for distance traveled.
- Taxis use a meter to give you a fair price.
- You can use **KakaoTaxi** or **JinjuTaxi** apps to order a taxi from your location to your destination to make it easier if your Korean is limited.



Transit information for getting around Jinju

- Express Bus (고속버스) terminal [kosok bus]
- Intercity Bus (시외버스) Terminal [shiwae bus]
- If you are travelling for more than 2 hours, an Express Bus is better for comfort, but it will cost more.

* Intercity bus companies offer cheaper bus fares to the same destinations.



Transit information for getting around Jinju

Jinju Station (진주역) [Jinjuyeok]

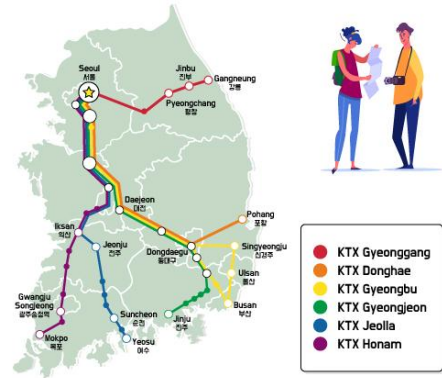


Transit information for getting around Jinju

- The KTX ❤️ train stops at Jinju Station.
- The KTX goes to central Seoul in less than four hours.
- Tickets can be bought online or at Jinju Station.
- The average ticket from Jinju to Seoul is 50,000 won.



KTX Route Map



Transit information for getting around Jinju

- The Mugunghwa is Korea's slowest and cheapest train.
- It stops in many small towns and villages and places not served by the KTX.
- Travel times are more than double that of KTX trains.

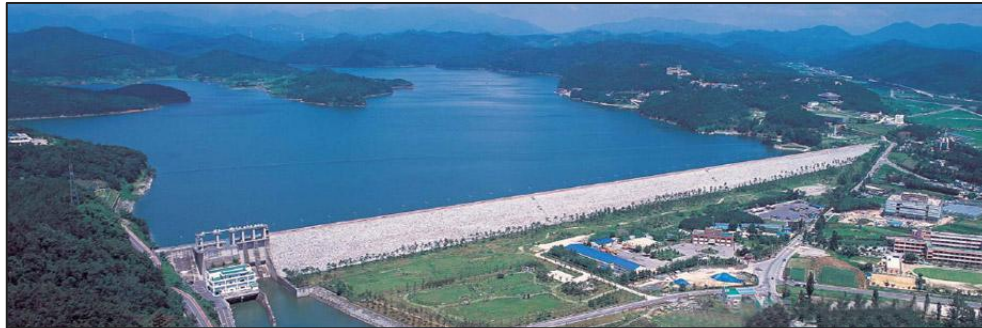


Welcome to Jinju

Recreation

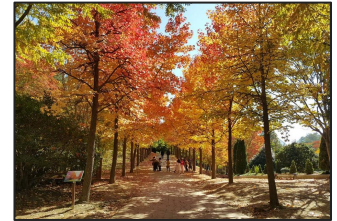
Hiking and walking

- There are many hiking opportunities in Jinju
- The Jinju Castle grounds
- Jinyang lake—there are LOTS of places around the lake you can investigate
- walking paths several kilometers long around Jinju



Gyeongsangnam-do Arboretum

- 250 acres
- many kilometers of walking paths
- water spaces, sitting spaces, playgrounds
- a small zoo!
- 25 minutes away by car
- 25 km away by bicycle on a car-free path



Wora Mountain



Wora Mountain from above (left). The mountain ridge trail (right) provides a view over all of Jinju and surrounding towns.

Cycling

- Along the Nam river there are cycle trails that lead to a lot of interesting places.
- If you travel North to Northwest, you can go all the way to Jinyang Lake.
- If you head South to Southeast you can go all the way to the Gyeongnam Arboretum in Banseong.
 - This is a 26 kilometer bicycle and pedestrian only path
 - It was built when an unused rail line was removed
 - There are places to eat and rest along the way and Jinju has installed bicycle pumps too!

<https://www.ibike.org/ibike/korea/essay/central/7-Jinju-si.htm>



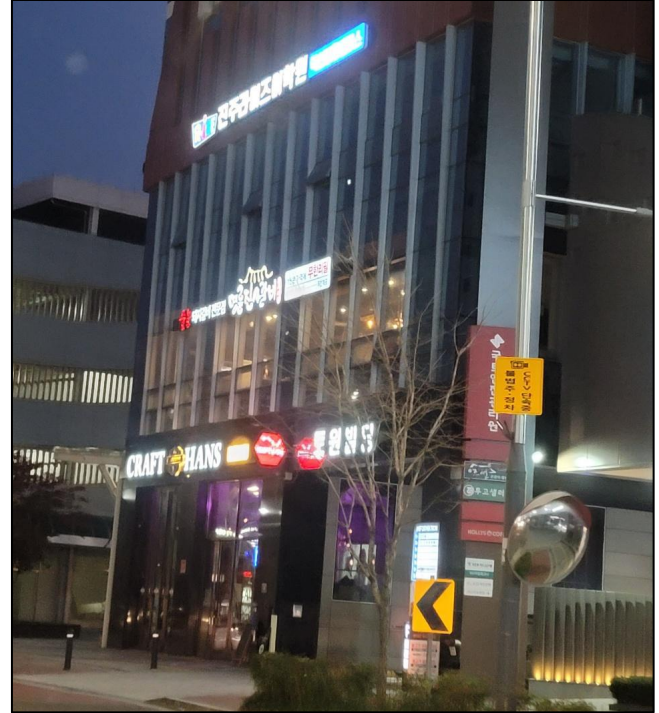
Running

- There are running facilities around Jinju
- Jinju Stadium has a good track
- There is also this site:
<https://runtrack.run/running-in/south-korea/jinju-si> for additional locations
- There are also running paths beside the river where people run



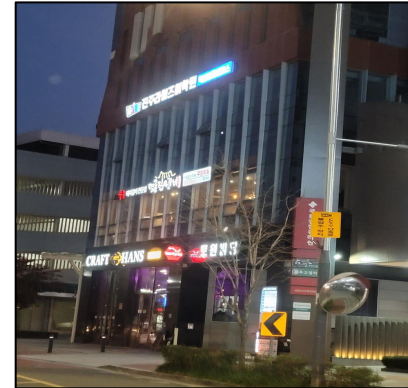
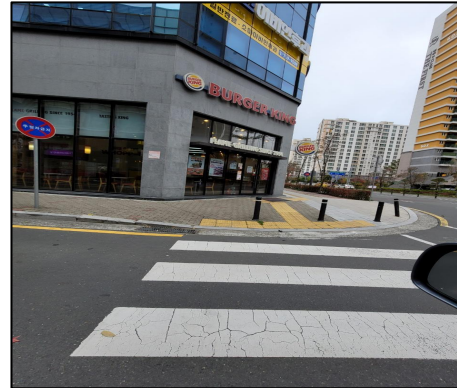
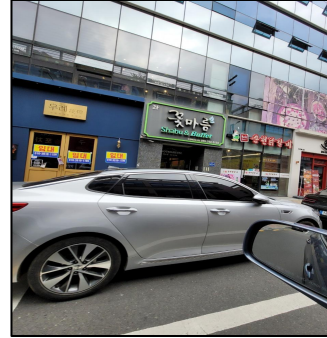
Cafés

- There are many cafés in Innovation City
- The Wain-ing is on the first floor of our building
- There are also good places a 3-5 minute walk away, including a kiosk with English menus and the best prices for an Americano
- There is also a Starbucks nearby
- If you go further into Jinju you will find tea houses and more unique coffee places too



Restaurants

- These images are from places in Innovation City near where you will work and sleep
- There are Korean, Japanese, Chinese, and Western-style restaurants
- Many places will deliver to your door
- Many more options available
- Just look around



Welcome to Jinju

Major Events in Jinju

Jinju Namgang Yudeung Light Festival

October 1 - October 15 (These are the usual dates for this festival to occur)



Nongae Festival

The 4th Friday to Sunday in May around Jinju Castle and Nam River area

Jinju Nongae Festival is held in Jinju Castle. It was established by Jinju's local governor Jeong Hyeon-seok in 1868. The festival begins with playing various music, songs and dances. The ceremony is followed by folk performances and various events that showcase the Gyobang culture.



Jinju Masked Dance and Drama Festival

The 4th Friday to Sunday in May around Namgang stage, in front of Gyeongnam Culture Art center.

Jinju Mask Dance Festival is held for 3 days on the fourth Friday, Saturday and Sunday of May. Five Korean traditional mask dance performances including 'Bongsan Mask Dance' and 'Jinju Ogwangdae' are showcased in the festival.



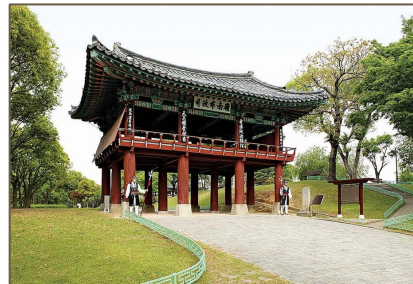
Welcome to Jinju

Tourist Attractions

Jinju Castle

- Built during the Three Kings period
- Had private residences until 1984
- Now a cultural site
- Open from 9am to 10pm
- Admission fee: 2,000 won

* Free admission if you have your ARC with a Jinju address or after 6pm



Jinju Rail Bikes (진주 레일 바이크)

- The rail bike trail overlooks Nam River and Pyeongeo-dong
- 30-40 minute ride
- Small fee required



Oktoberfest on Namhae Island

Usually the first weekend of October

German Village in Namhae



Welcome to Jinju

Other Things

Tips for Learning

- www.talktomeinKorean.com
- Local private tutors via the Jinju Facebook group
- Jinju Language Exchange (currently not meeting but join the Facebook group for more information)
- YWCA (free, Female staff only) – contact them first (or have an Admin help you) to see if classes are being offered.
- Talk to your co-teacher (if you have one) for more advice

More About the Jinju Area

- <https://www.jinju.go.kr/english.web> (Jinju city website)
- <https://www.jinju.go.kr/05190/05641.web> (Jinju city COVID status)
- <https://blog.naver.com/pearl286/222384448698> (Geumho Lake Park)
- https://www.tripadvisor.com/Tourism-g735660-Jinju_Gyeongsangnam_do-Vacations.html

Thank You

감사합니다